

Full Paper Template Sample for the SURVEILLANCE8 Conference 2015

Amine Brahmi¹

¹LASPI - IUT de Roanne
20 Avenue de Paris, 42334 Roanne Cedex, France
{Amine.Brahmi}@univ-st-etienne.fr

Abstract

This L^AT_EX sample file is an example of the full paper that must be submitted, after acceptance, to the SURVEILLANCE8 Conference 2015 which will be held in Roanne, France, October 20-21 2015. Template files for L^AT_EX and MS Word are available at the conference website (<http://surveillance8.sciencesconf.org/>). A digital version of your full paper should be submitted online on the *Submit Full Text* item of *Main Menu* page of the conference website **before September 15, 2015**. The full conference proceedings will be only published electronically on USB flash drives. However, a book of abstracts will be included in the conference kit and will be distributed to the participants. To facilitate preparation of your final camera-ready manuscript, we provide two template files. The first one (.doc) is intended to MS Word users, while the second one is a package for L^AT_EX adepts. The supported final paper file format is the **Portable Document Format (PDF)**.

1 Introduction: the templates

The digital PDF version of your manuscript will be processed to appear on the conference proceedings on USB flash drives. In order to standardize the layout of the various contributions and to insure the quality of the conference proceedings, you are highly invited to follow some basic rules given in the next sections of this document. As the digital version of your manuscript should be in PDF file format, different ways to convert your Word or L^AT_EX document are discussed in Section 3.

1.1 MS-Word template

MS-Word users should use the *Surveillance8_full_paper_template.doc* file which can be extracted from the package *S8_full_paper_word.zip* from the conference's website. All the formatting of the text is based on MS-Word **personal styles**, so that the user just has to replace the sample text by the original one. There is no need to redefine anything concerning the layout of the paper. This is an easy to use all-in-one solution.

Comments are provided within the MS-Word template document. Please be sure either to **hide comments before printing** or to print your final manuscript by selecting *document* in the **print menu**.

1.2 L^AT_EX template

L^AT_EX users should download from the conference's website the *S8_full_paper_latex.zip* package. It includes, the *Surveillance8_full_paper_template.tex* file which uses the *srvlc8.cls* class file. It is mandatory to load the *srvlc8.cls* class by calling the `\documentclass{}` command at the beginning of your .tex file. All the other necessary packages as well as the specific structure of your document are defined by the class file provided with the .zip package.

2 Page layout

2.1 General

The text should fit into a **257mm x 170mm** rectangle in **one column** format. The paper should be formatted following the A4-paper size ($297\text{mm} \times 210\text{mm}$) and using the following margins:

- ✓ top margin = 15mm
- ✓ bottom margin = 25mm
- ✓ right margin = 20mm
- ✓ left margin = 20mm

Page numbers appear automatically on the lower right corner. There should be no other header or footer on the pages.

2.2 Text layout

Use the font Times New Roman 11pt for normal text (MS-Word **content** style). If Times New Roman is not available the Times font may be used. The text should be justified.

If a heading stands alone on the bottom of a page, then copy/paste it to the top of the next page and leave open space at the bottom.

2.3 First page

2.3.1 Title of the paper

The title of the manuscript uses Times New Roman font, in 18pt bold and should appear centred at the top of the first page.

Follow authors' names and affiliations (MS-Word **Subtitle** style) in Times New Roman 12pt.

2.3.2 Abstract

Include a short abstract. The heading should be in 14pt Times New Roman bold (MS-Word **Abstract** style). Comes next the main text of the abstract in Times New Roman 11pt font size (MS-Word **Abstract_ content** style).

2.4 Headings

MS-Word users should use the **S8_ Section**, **S8_ Subsection** and **S8_ Subsubsection** styles to write main titles, subtitles and 3^d level subtitles, respectively. All three styles are included in the MS-Word template file.

2.5 Figures and tables

Figures and tables (e.g. Figure 1 and Table 1) should be centred and have a caption. Captions are placed at the bottom of the corresponding object.

Input noise (<i>db</i>)	Algorithm performance (%)	Separation quality (%)
-15 db	60	50
0 db	67	75
5 db	82	80
10 db	90	83

Table 1: Algorithm's performance and separation quality

MS-Word users should use the *Legend* tool of Word and the **Caption** style provided with the associated template file. The numbering of the objects must be consecutive and automatic so as to automate and ease cross-referencing.

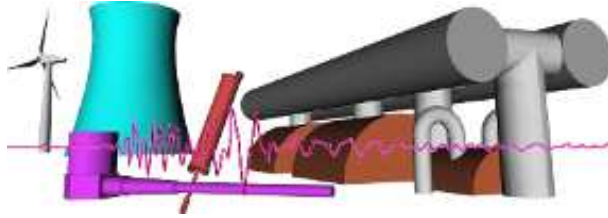


Figure 1: The logo of the SURVEILLANCE8 International Conference

2.6 Equations and units

All equations must be numbered consecutively. Their numbers must be parenthesised at the end of the corresponding line as in the following example:

$$\Phi(Ax + n) \tag{1}$$

The units should be given according to the International System of Units (SI) throughout the manuscript.

2.7 Acknowledgements and references

Acknowledgements, if any, should be typed at the end of the text before the references.

References should be quoted in the text between square brackets (e.g. [1]). The format for the references to books, journal papers and publications in proceedings is shown here after in the *References* section.

3 Generating the PDF file

3.1 L^AT_EX users

Pdflatex can be used to generate the required digital version of your manuscript you will have to upload to the conference's website. This program as well as other L^AT_EX useful free software can be obtained from e.g. the CTAN servers (<http://www.ctan.org>). Pdflatex creates a PDF version directly from the Latex file.

Alternatively, Latex users can use the free **dvips** software to convert the dvi output from their LaTeX manuscript onto a postscript file; finally, they can generate a pdf version of the .ps file using the **ps2pdf** command. Another variant could be the conversion of the dvi output to pdf using the **dvipdf** command.

3.2 MS-Word users

MS-Word users are advised to print their manuscript using the free **PDFCreator** software available from <http://www.adobe.com>. Alternatively, if you have the *Adobe Acrobat Distiller* or the *Adobe PDFWriter* installed, then you can also export your Word document in PDF format. Be careful to print your final manuscript without any comments or other marks.

3.3 Fonts in PDF

In order to circumvent problems concerning the displaying and printing of certain font types, we strongly recommend you to use **only** the **Times New Roman** font in your entire document, including figures (e.g. generated by *Matlab*), tables, equations, captions . . .

Acknowledgements - additional information

This PDF file is generated by the *dvipdfm* program as delivered with the **MiKTeX** distribution. The class file **srvtc8.cls** contains all the necessary packages that are explicitly declared with the `\RequirePackage{ }` command in the beginning of the class file. If you need additional packages, you can declare them using the previous command by replacing comment of *line 19* of the class file.

References

- [1] A. Brahmi, *Template Sample File 1 for Full Paper Submission*, Surveillance 8, Roanne, France, 2015 October 20-21, pp.100-110.

A Appendix

- Proofs
Proof ...
- Other additional content
To add here ...